

The electromechanical retractable road blocker RSB 71 has been specially designed to secure parking areas that require a dissuasive access control.

The RSB71 is placed in a pit with rainwater drainage flush with the road surface.

Description

1. Folded and welded steel housing, 3 to 6 mm thick.
2. Upper hood with security lock.
3. Lateral door for access to internal mechanism with security lock.
4. Electromechanical assembly comprising:
 - 3-phase asynchronous motor
 - Life-lubricated speed reduction gearbox with worm screw
 - Gearbox driven by pulleys and V-belt
 - Balance achieved by built-in compression springs
 - Obstacle driven by sprocket-wheels and roller chains
 - Limit switches activated by adjustable cams
 - Adjustable safety friction torque regulated by Ferodo disks.
5. Obstacle made of heavy-gauge steel sheet welded on a strong steel profile frame
6. Step skirt made up of 2 mm-thick steel sheets, curved and white enamelled with herringbone patterned red reflecting stripes.
7. Driving shaft mounted on pillow blocks with crankshaft/rod device ensuring smooth operation and mechanical locking of step when in upper position.
8. Programmable electronic control logic type AS1320 allowing various control operations and/or complementary accessories. The logic protection to dust and condensation is assured by a removable hood. Electrical protection is secured by a bipolar circuit-breaker.
9. Strong-section steel profile framework to be sealed in a reinforced concrete pit, flush with road surface.
10. Red/green traffic light mounted on cabinet.
11. Emergency crank for manual operation in case of power failure.

Surface treatment

Anti-corrosion protection

Internal mechanical items: electrozinc coating.
Housing : Phosphating with zinc and cathaphoresis.

Cabinet, obstacle and step skirt : sanding and metallisation with zinc.

Paint

1 coat of 2-component micaceous iron epoxy anti-rust primer.

1 coat of 2-component polyurethane top coat. Standard colour: orange RAL 2000

Technical characteristics

- Power supply : 230 V single phase.
- Frequency : 50/60Hz
- Height of raised obstacle : 350 mm
- Length of obstacle : 2100, 2900 or 3500 mm
- Motor : 3-phase asynchronous, 0,25 kW, 950 rpm
- Reduction gearbox : worm-screw, life-lubricated
- Maximum load by axle : 16 tons
- Power consumption : in stand-by: 150 W
in operation: 700 W
- Operational temperature: -20 C to + 50 C
- Net weight: model 1 = 500 kg
model 2 = 595 kg
model 3 = 690 kg
- Opening time : 3 seconds
- Protection index (housing) : IP44

Options

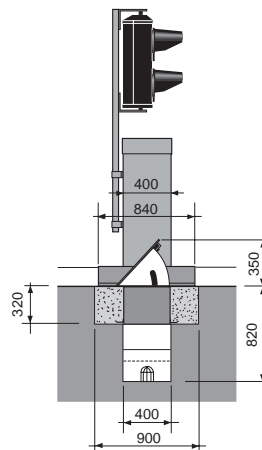
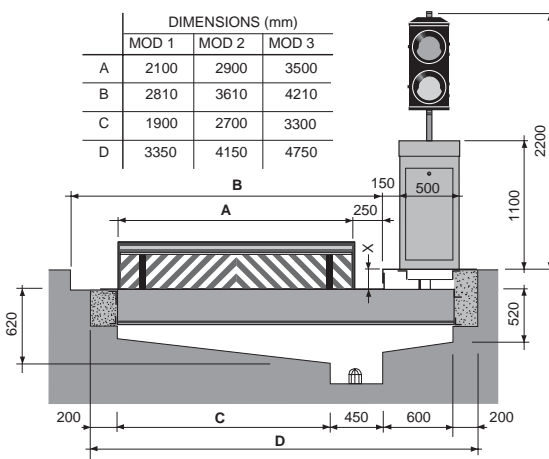
- Vehicle presence detector(s) with detection loop(s).
- Additional 3-push button box.
- Additional two-colour traffic light (red/green) for dual directional traffic.
- Out-of-standard configuration (see below; to be specified while ordering).

Work to be provided by the customer

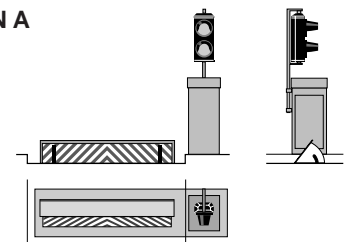
- Electrical power supply.
- Connection wiring to the control units.
- Pit in reinforced concrete with rainwater drainage (see installation drawing).

Dimensions *(not contractua)*

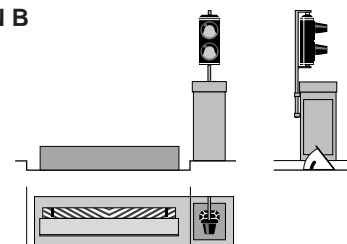
DIMENSIONS (mm)			
	MOD 1	MOD 2	MOD 3
A	2100	2900	3500
B	2810	3610	4210
C	1900	2700	3300
D	3350	4150	4750



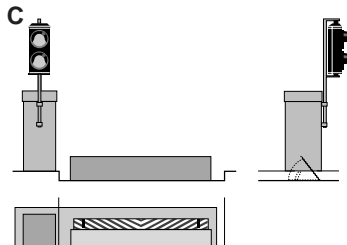
CONFIGURATION A
(standard)



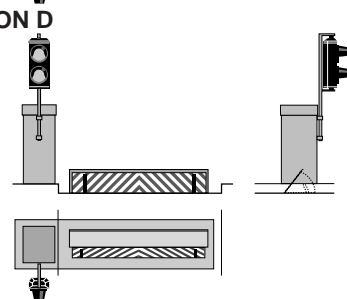
CONFIGURATION B
(on request)



CONFIGURATION C
(on request)



CONFIGURATION D
(on request)



Our dealer



Av. Mercator 5 B-1300 Wavre Belgium
Tel. +32 10 23 02 11 / Fax +32 10 23 02 02
asmail@automatic-systems.com
www.automatic-systems.com



With a constant view of adopting the latest technological developments, Automatic Systems reserves the right to amend the information above, at any time.